



IL-1R9 Polyclonal Antibody

Catalog No	YP-Ab-13375
Isotype	IgG
Reactivity	Human;Mouse
Applications	WB;ELISA
Gene Name	IL1RAPL2
Protein Name	X-linked interleukin-1 receptor accessory protein-like 2
Immunogen	The antiserum was produced against synthesized peptide derived from human IL1RAPL2. AA range:141-190
Specificity	IL-1R9 Polyclonal Antibody detects endogenous levels of IL-1R9 protein.
Formulation	Liquid in PBS containing 50% glycerol, 0.5% BSA and 0.02% sodium azide.
Source	Polyclonal, Rabbit,IgG
Purification	The antibody was affinity-purified from rabbit antiserum by affinity-chromatography using epitope-specific immunogen.
Dilution	Western Blot: 1/500 - 1/2000. ELISA: 1/20000. Not yet tested in other applications.
Concentration	1 mg/ml
Purity	≥90%
Storage Stability	-20°C/1 year
Synonyms	IL1RAPL2; IL1R9; X-linked interleukin-1 receptor accessory protein-like 2; IL-1 receptor accessory protein-like 2; IL-1-RAPL-2; IL-1RAPL-2; IL1RAPL-2; IL1RAPL-2-related protein; Interleukin-1 receptor 9; IL-1R-9; IL-1R9; Three immunoglobuli
Observed Band	79kD
Cell Pathway	Membrane; Single-pass type I membrane protein.
Tissue Specificity	Detected at low levels in fetal and adult brain, in particular in the frontal lobe, temporal lobe and cerebellum. Detected at very low levels in skin, liver, fetal ovary and in placenta.
Function	similarity:Belongs to the interleukin-1 receptor family.,similarity:Contains 1 TIR domain.,similarity:Contains 3 Ig-like C2-type (immunoglobulin-like) domains.,tissue specificity:Detected at low levels in fetal and adult brain, in particular in the frontal lobe, temporal lobe and cerebellum. Detected at very low levels in skin, liver, fetal ovary and in placenta.,
Background	The protein encoded by this gene is a member of the interleukin 1 receptor family. This protein is similar to the interleukin 1 accessory proteins, and is most closely related to interleukin 1 receptor accessory protein-like 1 (IL1RAPL1). This gene and IL1RAPL1 are located at a region on chromosome X that is associated



with X-linked non-syndromic mental retardation. [provided by RefSeq, Jul 2008],

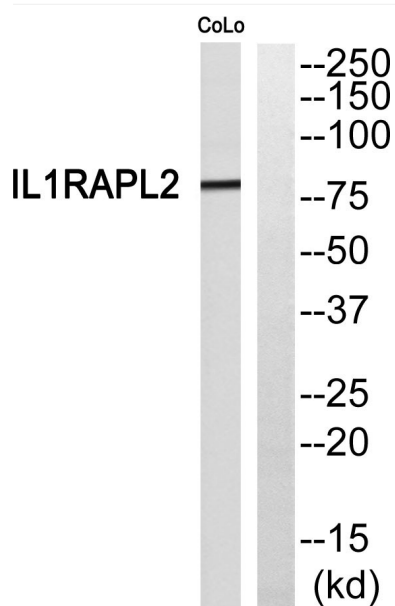
matters needing attention

Avoid repeated freezing and thawing!

Usage suggestions

This product can be used in immunological reaction related experiments. For more information, please consult technical personnel.

Products Images



Western blot analysis of IL1RAPL2 Antibody. The lane on the right is blocked with the IL1RAPL2 peptide.